

Sample School Program - Yr 5/6

WEDNESDAY

10.30am ARRIVE AT WOMBAROO



Course Introductions / Safety Briefing
Group / Dorm Allocations

11.30 Activity 1

GTKY, Icebreakers, or Team Games
(Dependant on Time).

12.15 Lunch - Dining Hall

1.00 Activity 2

- | | |
|---------------------|-------------------|
| 1. Team Initiatives | 3. Vert Challenge |
| 2. Giant Swing | 4. Raft Builder |

3.00 Afternoon tea – Dining Hall

3.15 Activity 3

- | | |
|---------------------|---------------------|
| 1. Giant Swing | 3. Raft Builder |
| 2. Team Initiatives | 4. Team Initiatives |

5.15 Showers

6.00 Dinner - Dining Hall

7.00 School run Night Activities

8.30 Campfire and Supper

THURSDAY

6.45 Rise and Shine

7.15 Breakfast - Dining Hall

8.00 Activity 4

- | | |
|---------------|---------------------|
| 1. Flying Fox | 3. Team Initiatives |
| 2. Archery | 4. Crate Stacking |

10.00 Morning tea – Dining Hall

10.15 Activity 5

- | | |
|-------------------|---------------|
| 1. Crate Stacking | 3. Flying Fox |
| 2. Raft Builder | 4. Archery |

12.15 Lunch - Dining Hall

1.00 Activity 6

Wide Games on the Oval

3.00 Afternoon tea – Dining Hall

3.15 Activity 7

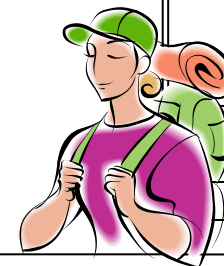
- | | |
|-------------------|-------------------|
| 1. Raft Builder | 3. Crate Stacking |
| 2. Vert Challenge | 4. Flying Fox |

5.15 Showers

6.00 Dinner - Dining Hall

7.00 School Run Night Activities

8.30 Campfire and Supper



FRIDAY

6.30 Rise and Shine

Pack bags ready for departure



7.15 Breakfast – Dining Hall

8.00 Activity 8

- | | |
|---------------|-------------------|
| 1. Archery | 3. Giant Swing |
| 2. Flying Fox | 4. Vert Challenge |

10.00 Morning Tea – Dining Hall

10.15 Activity 9

- | | |
|-------------------|----------------|
| 1. Vert Challenge | 3. Archery |
| 2. Crate Stacking | 4. Giant Swing |

12.15 Lunch - Dining Hall

1.00 Farewells

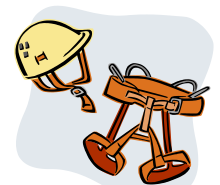
1.30 Depart Wombaroo

INSTRUCTORS

- | | |
|----|----|
| 1. | 3. |
| 2. | 4. |

ASSISTANTS

- 1.



Notes: